

G70 Database Manager

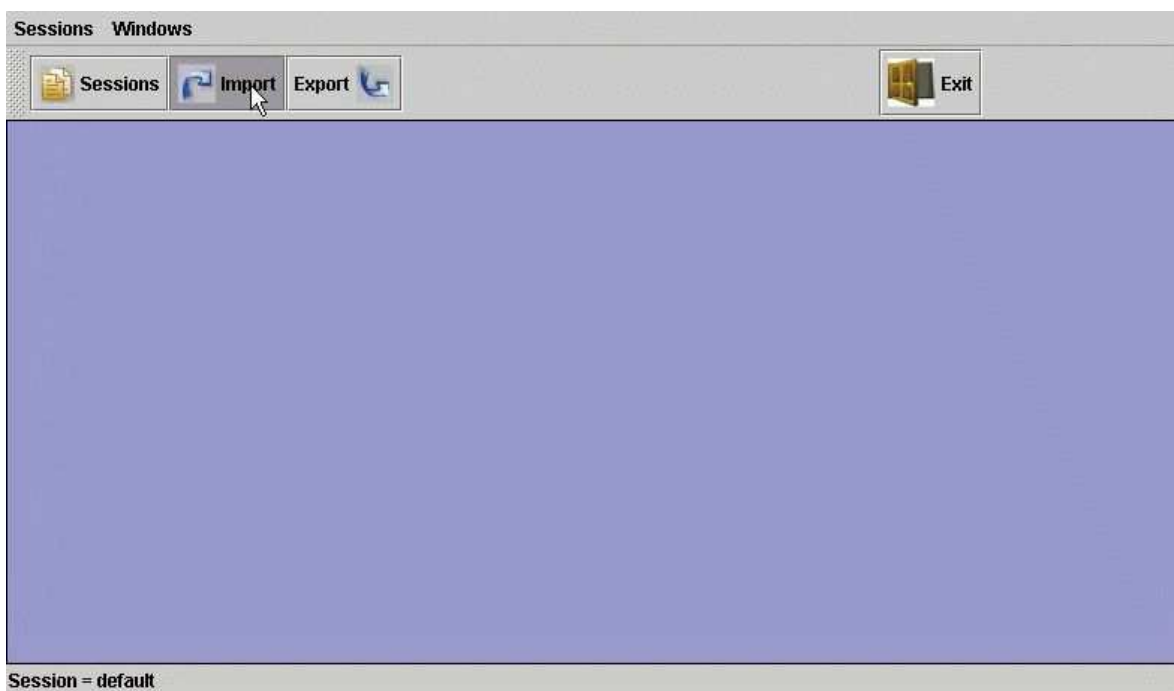
All functions described are compatible for Mac users OS X too.

How to Import a Database

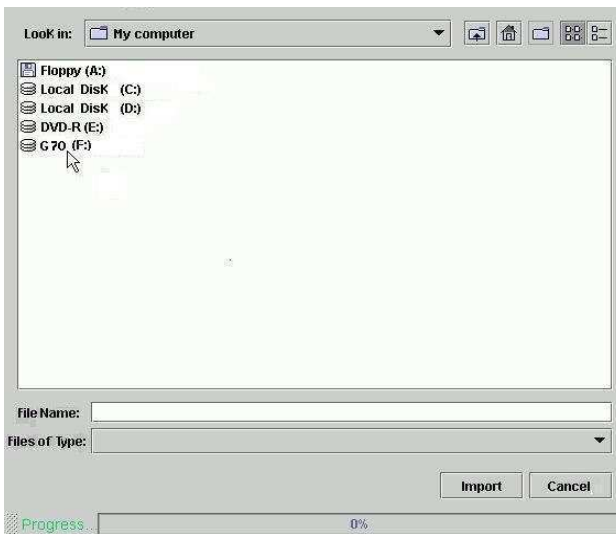
To import directly from G-70, connect G-70 to computer with USB cable ensuring the unit is in USB DATA STORAGE mode. To activate USB STORAGE mode:

- a) Press MENU button on front panel
- b) Press USB DATA STORAGE button on screen
- c) Press INTERNAL MEMORY or EXTERNAL MEMORY on screen

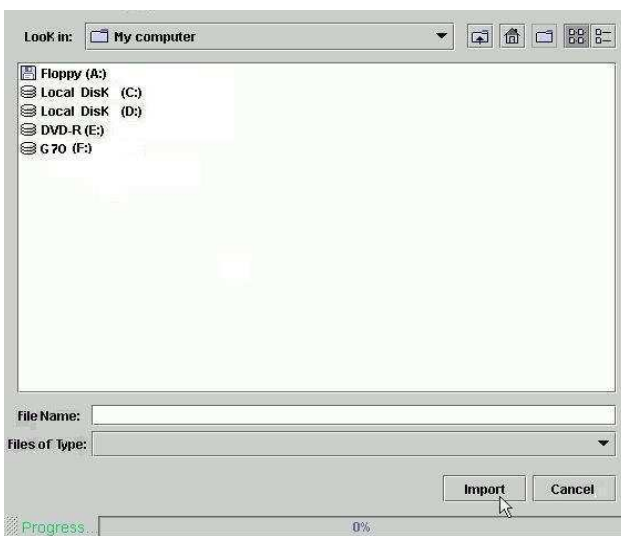
1. Click on “Import”



2. Choose the database that you want to import from a directory
To import directly from G-70 select the G70 SSD icon drive.

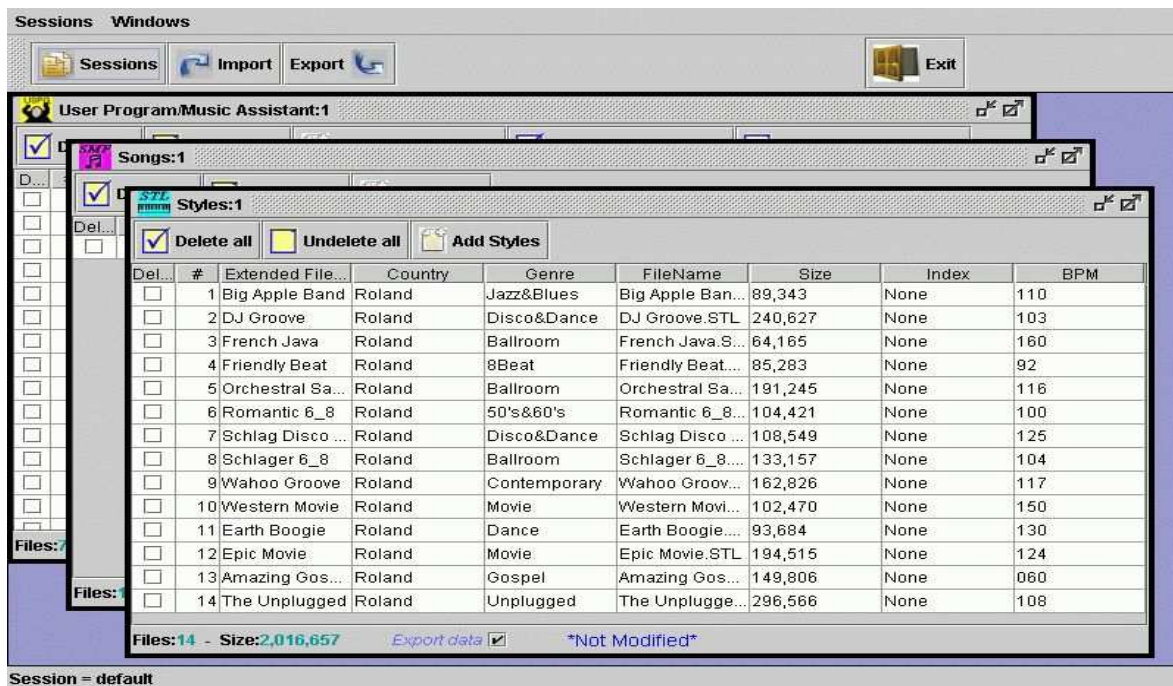


3. Press “Import”



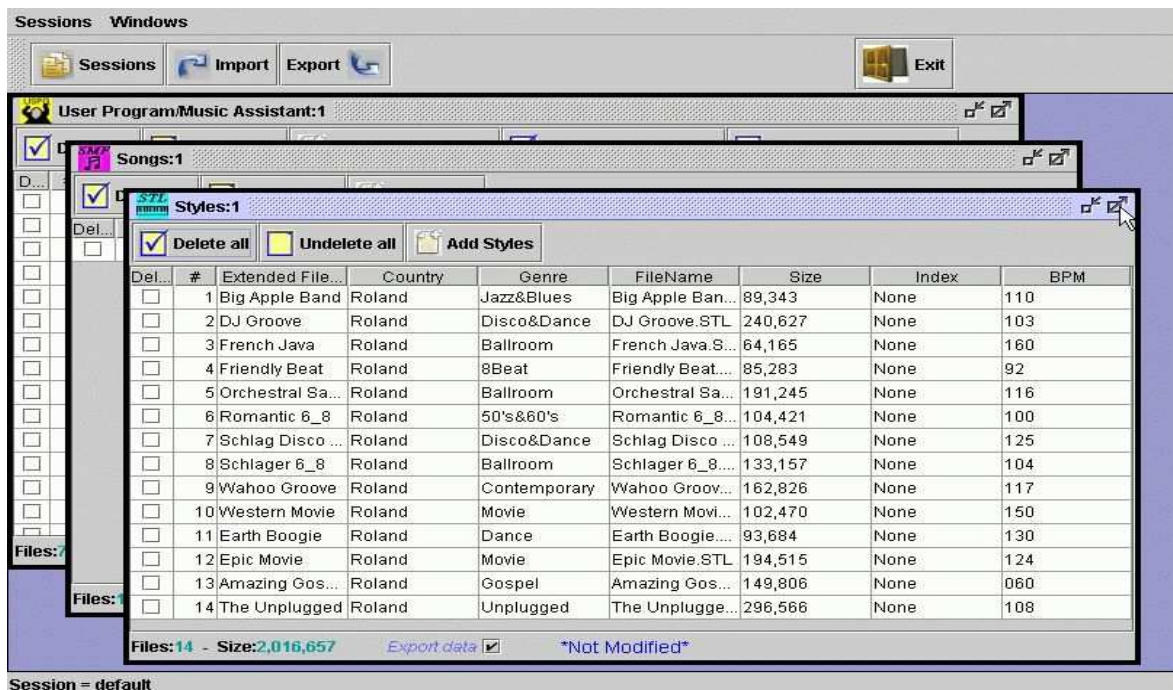
The database is imported into your “default” session.

You can see three different windows: one for song, one for styles, one for user program



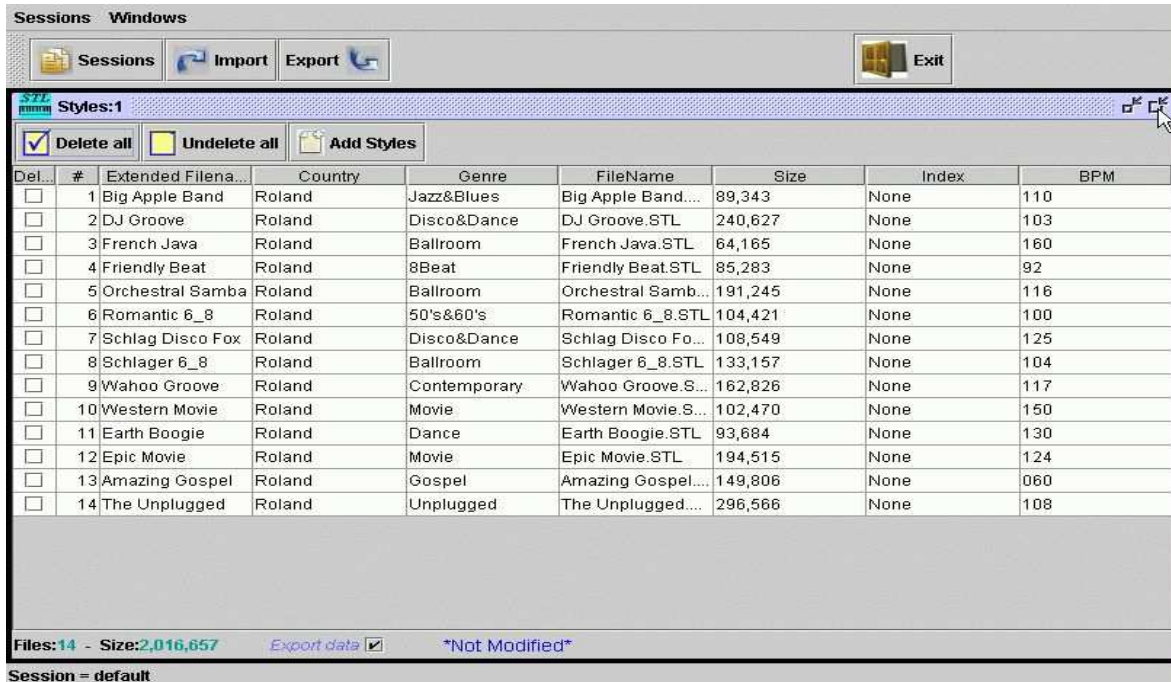
To make a partially open window fully open

1. Click on the right top of the window



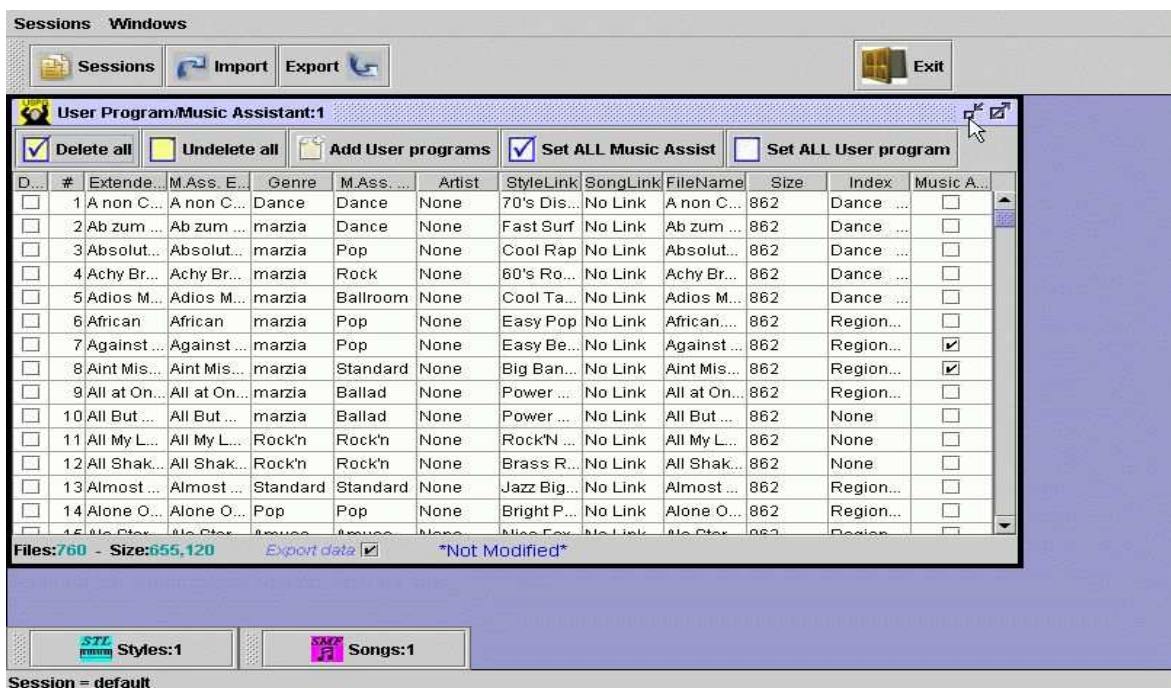
To make a fully open window partially open

1. Click on the right top of the window



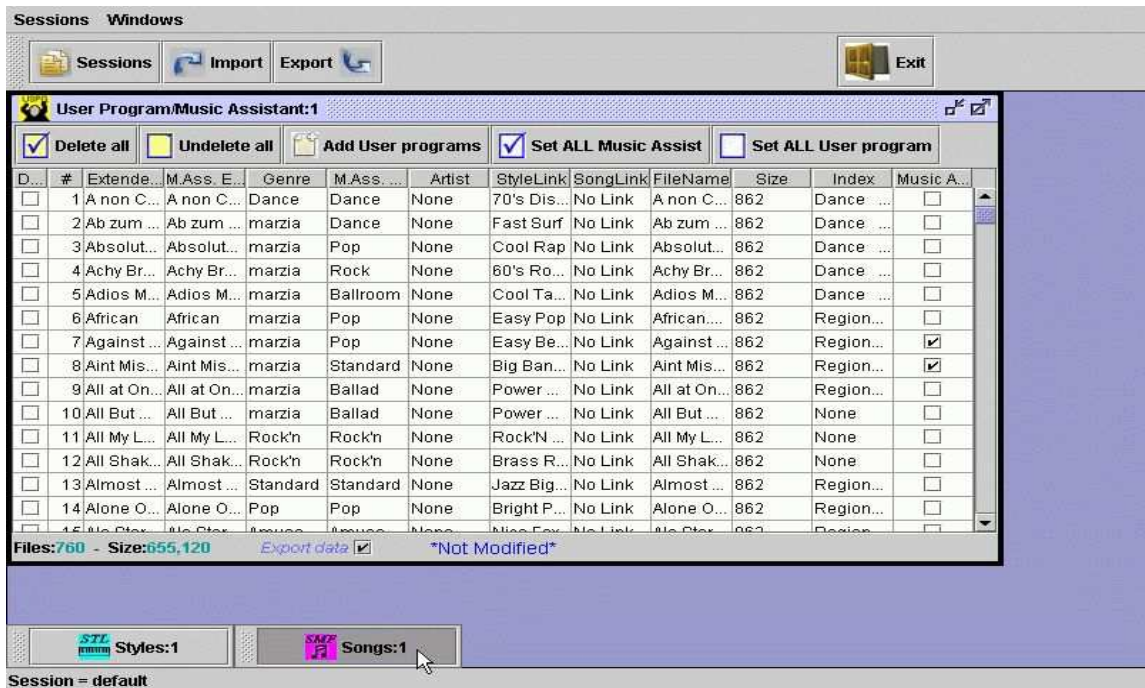
To remove a visible window, but keep that window running

1. Click on right top of the windows



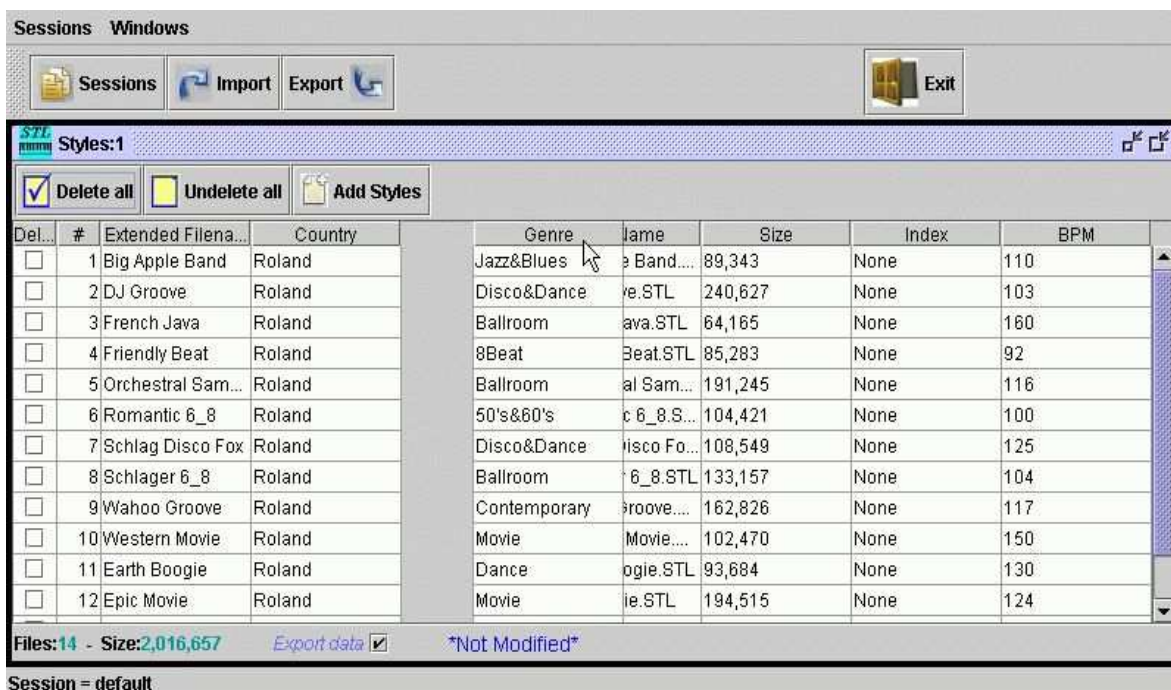
To view a window that is running but not visible

1. Click on the icon



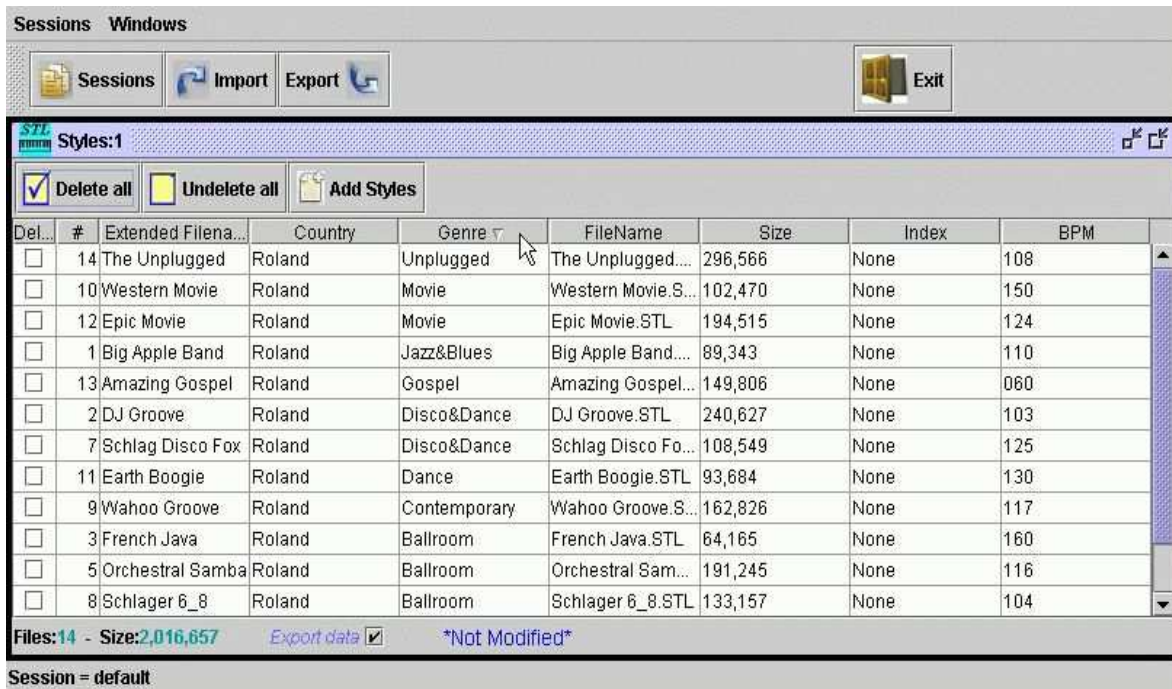
How to move columns

1. By using the left button of the mouse click and hold on a column and move it right or left



How to Order files

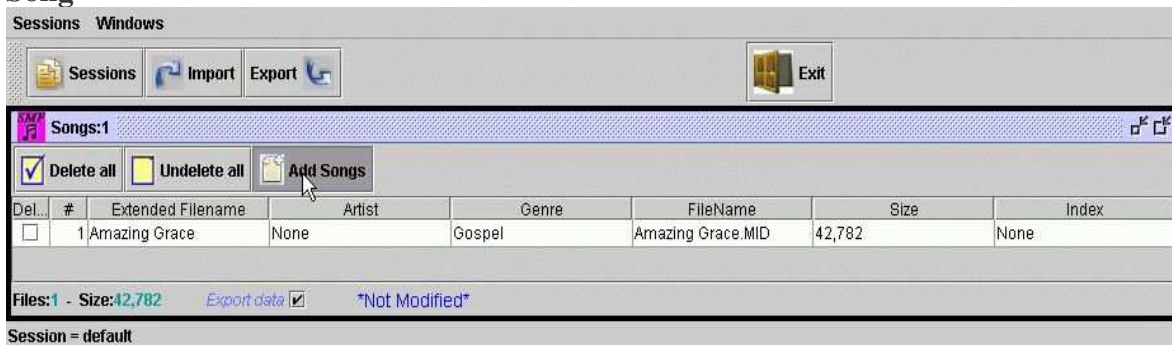
1. Click on the top of a column



How to add songs/styles/User program/Music Assistant on database

1. Click on the “Add Styles/Songs/User program” button on each corresponding window:

Song



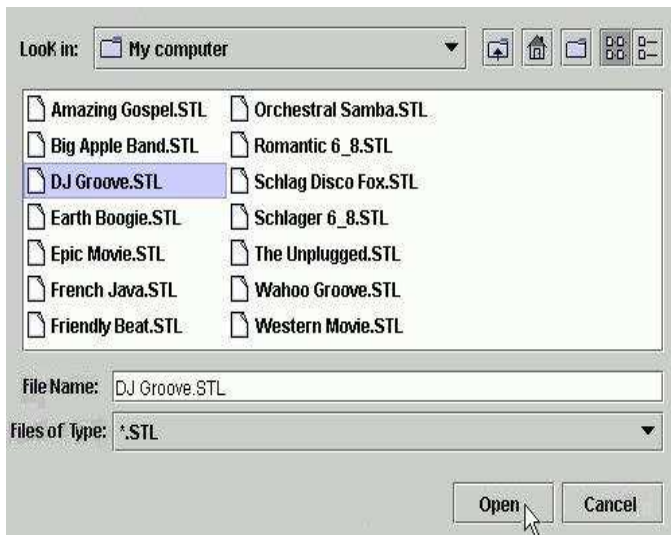
Style



User Program/Music Assistant



2. Choose a directory, select files and click “Open”



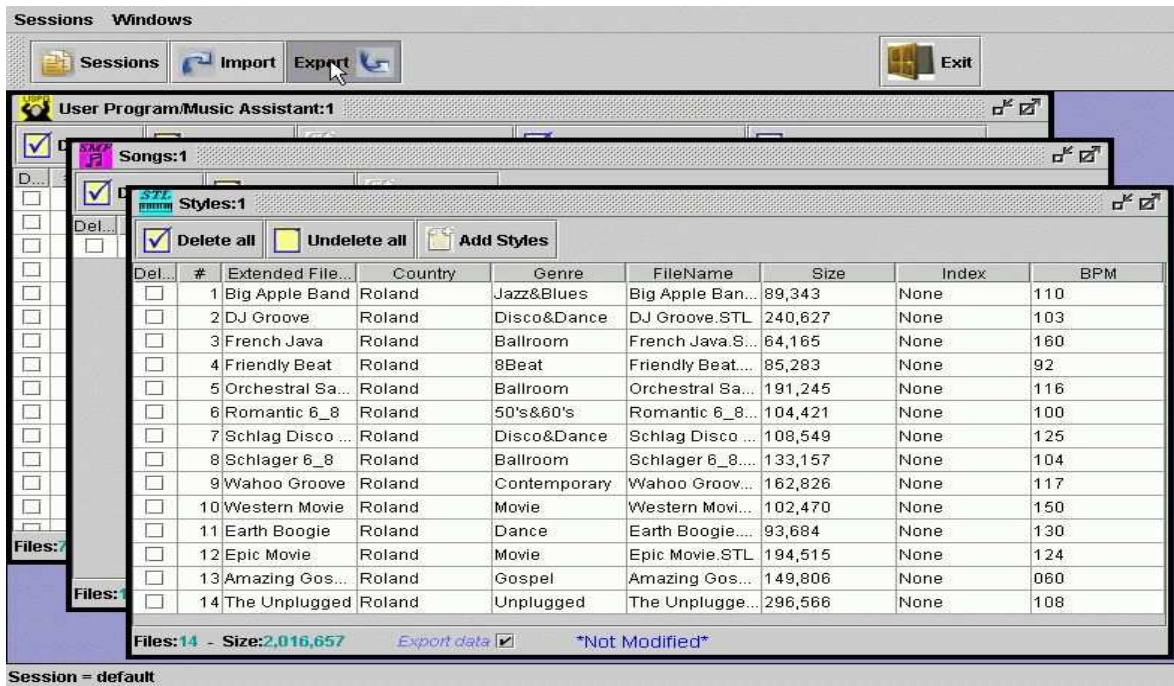
....your database is upgraded.

How to Export a database

To export directly from G-70, connect G-70 to computer with USB cable ensuring the unit is in USB DATA STORAGE mode. To activate USB STORAGE mode:

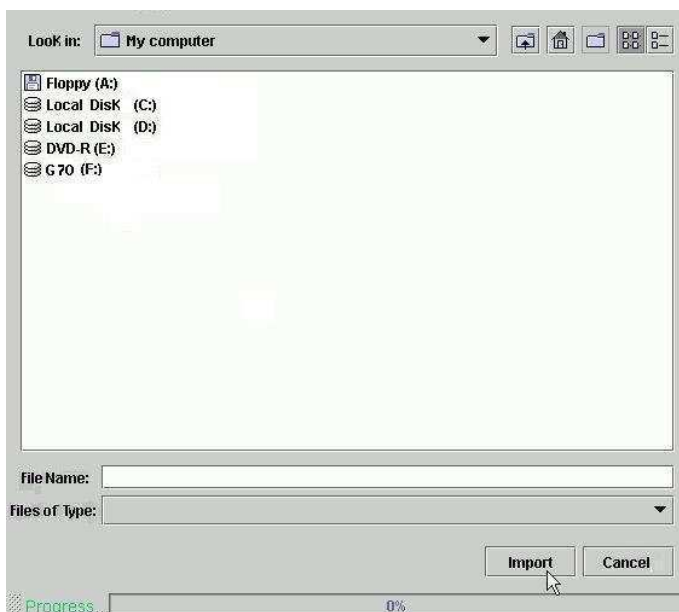
- Press MENU button on front panel
- Press USB DATA STORAGE button on screen
- Press INTERNAL MEMORY or EXTERNAL MEMORY on screen

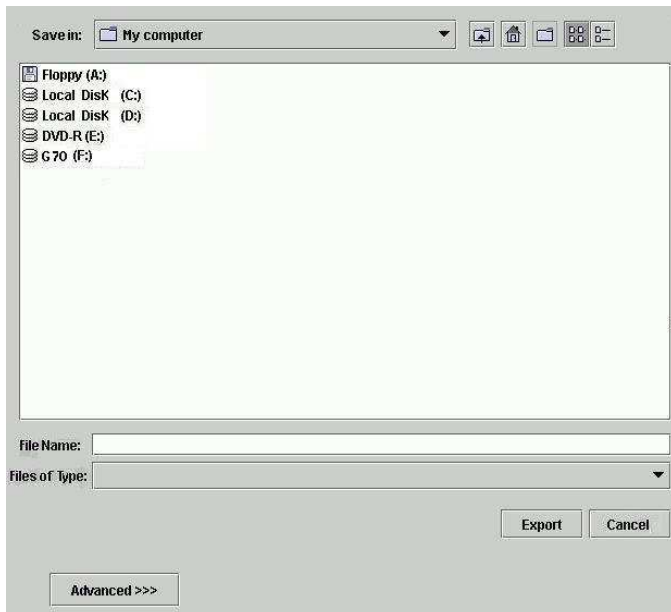
1. Click “Export”



2. Choose a directory where you want to export your new database and click “Export”

To export directly to G-70 select the G70 SSD icon drive.





Cautions after an exporting into G 70!!!

For Windows:

When all files have been exported on G-70, terminate the USB connection using the tray icon at the right of your computer's tool bar.

The tray icon related to the USB connection looks like a green arrow on top of an electronic device. Leave the mouse pointer on this icon and wait for the "Safely remove hardware" message to appear. Using the left mouse button, double-click this icon to open a window that lists all hardware devices that are currently connected to that USB port.

Select "USB mass storage device" and check at the bottom whether the description refers to your G-70 ("G-70 mass storage device").

Click "Disconnect", and in the next window "OK". Wait until a message informs you that you can disconnect the hardware.

Click "OK" to close this window.

On the G-70, press the [EXIT] button or [DISCONNECT] field.

For Mac:

When all files have been copied, drag the "G-70_SSD" icon to the recycle bin (or use the equivalent shortcut).

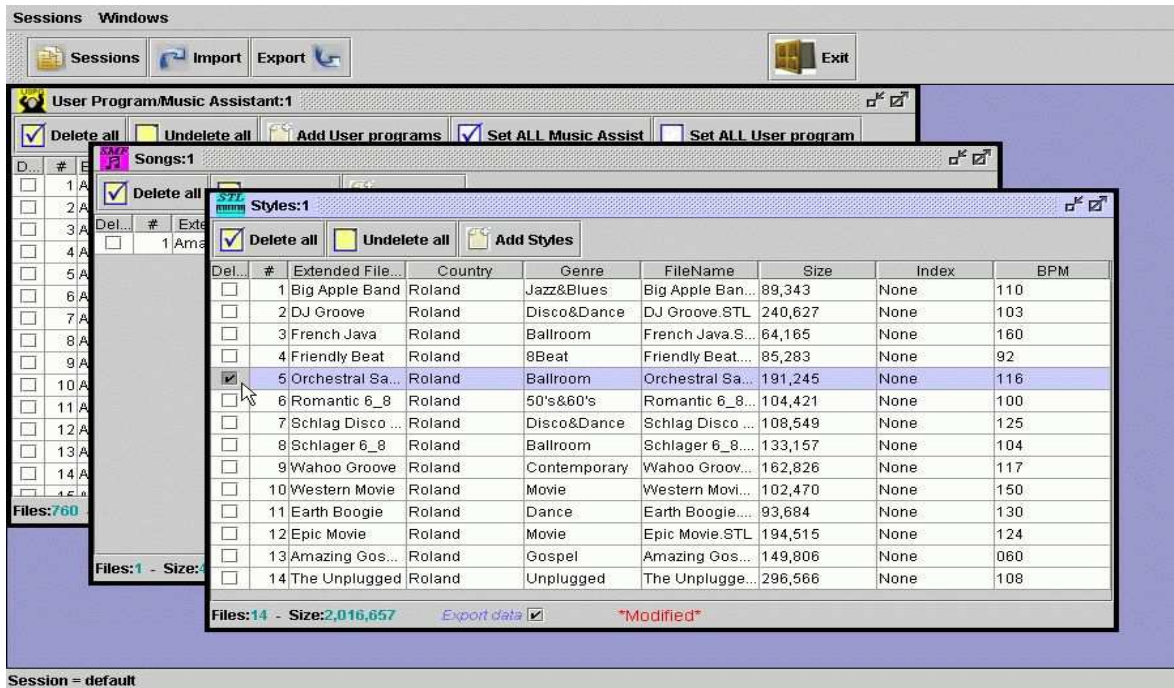
Wait until the icon has disappeared from your desktop.

On the G-70, press the [EXIT] button or [DISCONNECT] field.

An inappropriate disconnection can cause a loss of data.

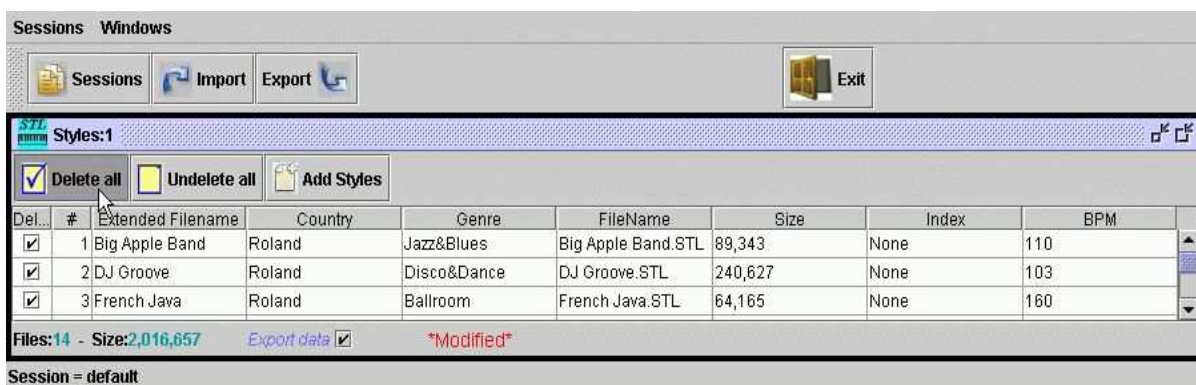
How to delete a Song/Style/User Program

1. Click on the corresponding field in the “Delete” column of every style/Song/User Program window. It will show a “tick” sign. It means that after exporting database, files marked with “tick” will be deleted.



How to delete all files in one shot

- 1a. Click “Delete All”



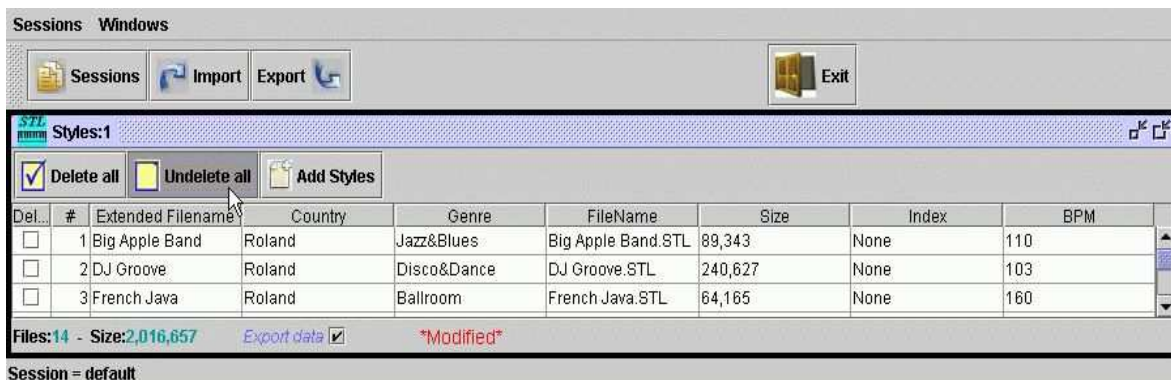
or

- 1b. By using the left button of the mouse click one field and hold down, then move down. All selected fields become blue. By using the right button of the mouse click once and choose “delete on”.



How to restore all files in one shot

1a. Click “Undelete All”



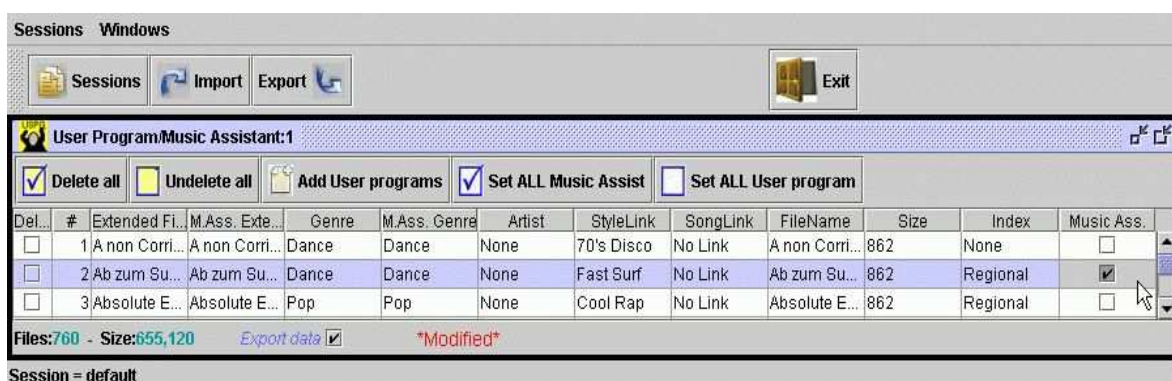
or

1b. By using the left button of the mouse click one field and hold down, then move down. All selected fields become blue. By using the right button of the mouse click once and choose “delete off”.



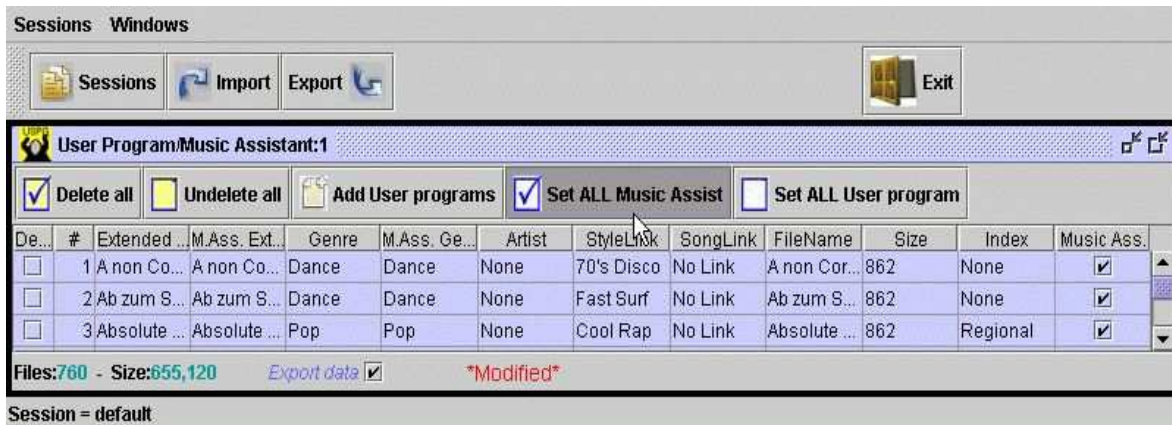
How to set a User program as a Music Assistant

1. Click on the corresponding field in the “Music Ass.” column of the User Program window. It will show a “tick” sign. It means that after exporting database, files marked with “tick” will become Music Assistant too.



How to set All Music Assistant in one shot

1a. Click “Set All Music Assistant”



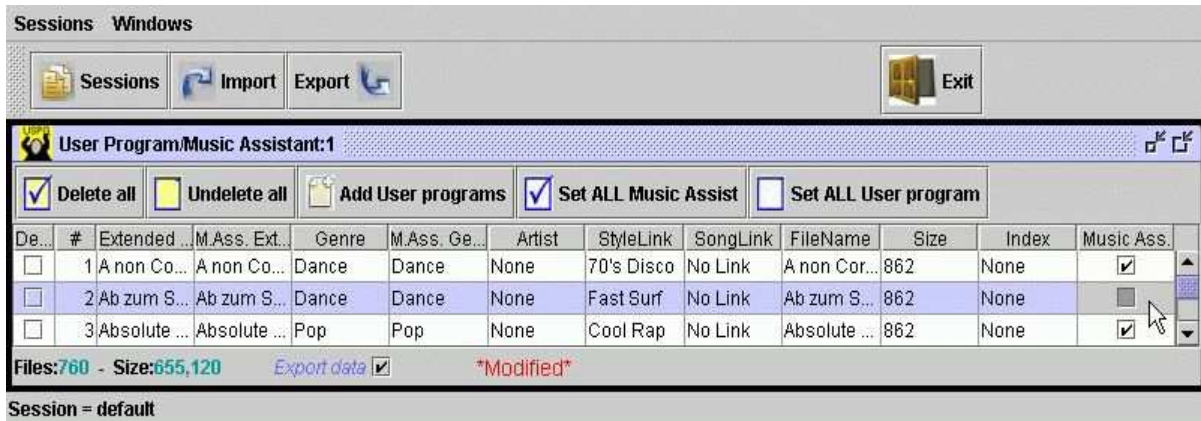
or

1b. By using the left button of the mouse click one field and hold down, then move down. All selected fields become blue. By using the right button of the mouse click once and choose “Music Assistant On”.



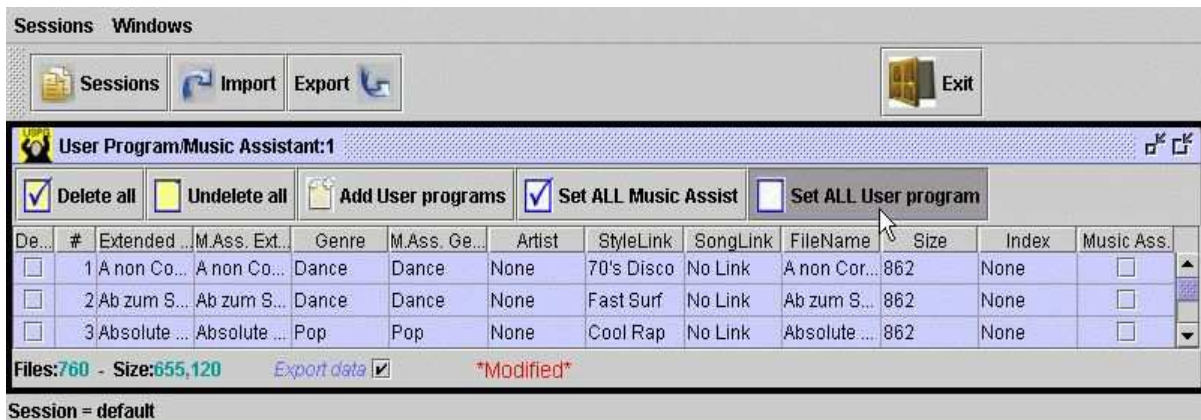
How to set a User program without music Assistant

1. Click on the corresponding field in the “Music Ass.” column of the User Program window. The “tick” sign disappears. It means that after exporting database, files not marked with “tick” will not become Music Assistant.



How to set ALL User Program without Music Assistant in one shot

- 1a. Click “Set All User Program”



or

- 1b. By using the left button of the mouse click one field and hold down, then move down. All selected fields become blue. By using the right button of the mouse click once and choose “Music Assistant Off”.



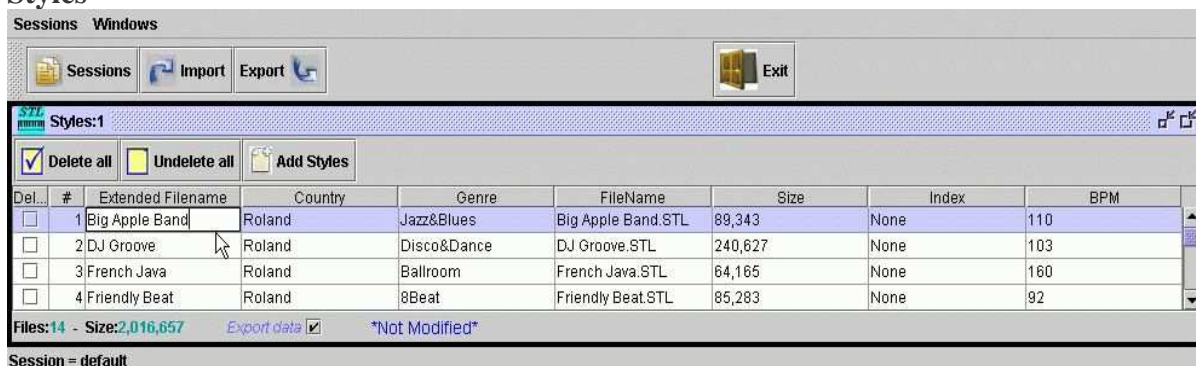
How to rename a Song/Style/User Program

Note (for Mac users):

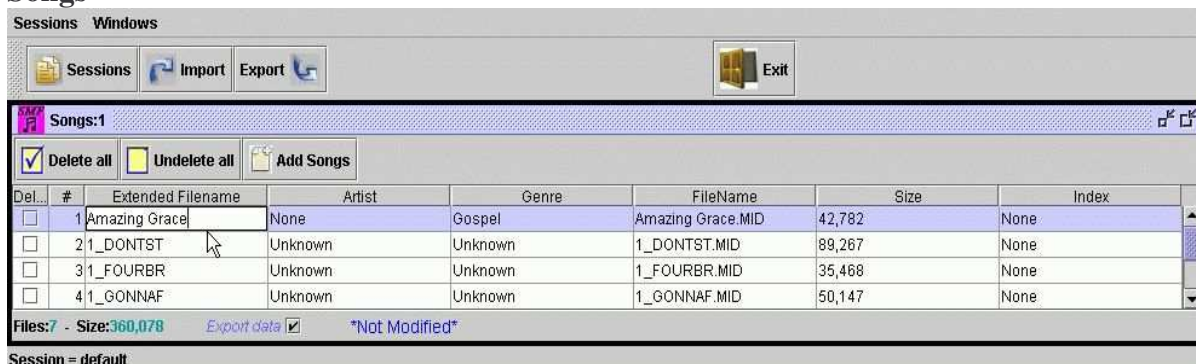
Functions using the right button of the mouse for windows, can be activated using key “ctrl” and Mouse button

1. Double click on the field of “Extend file name” column of the style/Song/User Program window
2. Write another name

Styles



Songs



User Program

Sessions Windows

Sessions Import Export Exit

User Program/Music Assistant:1

☒ Delete all ☐ Undelete all ☒ Set ALL Music Assist ☐ Set ALL User program

Del...	#	Extended Filename	M.Ass. Extended Filename	Genre	M.Ass. Ge...	Artist	StyleLink	SongLink	FileName	Size	Index	Music A...
<input type="checkbox"/>	1	A non Corrida	A non Corrida	Dance	Dance	None	70's Disco	No Link	A non Corr...	862	None	<input type="checkbox"/>
<input type="checkbox"/>	2	Ab zum Sueden	Ab zum Sueden	Dance	Dance	None	Fast Surf	No Link	Ab zum Su...	862	None	<input type="checkbox"/>
<input type="checkbox"/>	3	Absolute Everyone	Absolute Everyone	Pop	Pop	None	Cool Rap	No Link	Absolute E...	862	None	<input type="checkbox"/>
<input type="checkbox"/>	4	Achy Broken Heart	Achy Broken Heart	Rock	Rock	None	60's Rock'N	No Link	Achy Broke...	862	None	<input type="checkbox"/>

Files:760 - Size:855,120 Export data ☒ *Modified*

Session = default

Note:

The extended ASCII code characters are not provide.

The available characters are :

Table N.1

HEX	DEC	ASCII	HEX	DEC	ASCII	HEX	DEC	ASCII	HEX	DEC	ASCII
00	0	NULL	20	32	(SP)	40	64	@	60	96	`
01	1	SOH	21	33	!	41	65	A	61	97	a
02	2	STX	22	34	"	42	66	B	62	98	b
03	3	ETX	23	35	#	43	67	C	63	99	c
04	4	EOT	24	36	\$	44	68	D	64	100	d
05	5	ENQ	25	37	%	45	69	E	65	101	e
06	6	ACK	26	38	&	46	70	F	66	102	f
07	7	BEL	27	39	'	47	71	G	67	103	g
08	8	BS	28	40	(48	72	H	68	104	h
09	9	HT	29	41)	49	73	I	69	105	i
0A	10	LF	2A	42	*	4A	74	J	6A	106	j
0B	11	VT	2B	43	+	4B	75	K	6B	107	k
0C	12	FF	2C	44	,	4C	76	L	6C	108	l
0D	13	CR	2D	45	-	4D	77	M	6D	109	m
0E	14	SO	2E	46	.	4E	78	N	6E	110	n
0F	15	SI	2F	47	/	4F	79	O	6F	111	o
10	16	DLE	30	48	0	50	80	P	70	112	p
11	17	DC1	31	49	1	51	81	Q	71	113	q
12	18	DC2	32	50	2	52	82	R	72	114	r
13	19	DC3	33	51	3	53	83	S	73	115	s
14	20	DC4	34	52	4	54	84	T	74	116	t
15	21	NAK	35	53	5	55	85	U	75	117	u
16	22	SYN	36	54	6	56	86	V	76	118	v
17	23	ETB	37	55	7	57	87	W	77	119	w
18	24	CAN	38	56	8	58	88	X	78	120	x
19	25	EM	39	57	9	59	89	Y	79	121	y
1A	26	SUB	3A	58	:	5A	90	Z	7A	122	z
1B	27	ESC	3B	59	;	5B	91	[7B	123	{
1C	28	FS	3C	60	<	5C	92	\	7C	124	
1D	29	GS	3D	61	=	5D	93]	7D	125	}
1E	30	RS	3E	62	>	5E	94	^	7E	126	~
1F	31	US	3F	63	?	5F	95	_	7F	127	(sp)

Note:

Press "Enter" or click the left button of the mouse outside the rename field, so that the new name will be updated on database.

How to rename a “Genre” of the Song/Style/User Program

Note (for Mac users):

Functions using the right button of the mouse for windows, can be activated using key “ctrl” and Mouse button

1. Double click on the field “Genre” column of the style/Song/User Program window
2. Write another name

Styles

Sessions Windows

Sessions Import Export Exit

Styles:1

☒ Delete all ☐ Undelete all Add Styles

Del...	#	Extended Filename	Country	Genre	FileName	Size	Index	BPM
<input type="checkbox"/>	1	Big Apple Band	Roland	Jazz&Blues	Big Apple Band.STL	89,343	None	110
<input type="checkbox"/>	2	DJ Groove	Roland	Disco&Dance	DJ Groove.STL	240,627	None	103
<input type="checkbox"/>	3	French Java	Roland	Ballroom	French Java.STL	64,165	None	160
<input type="checkbox"/>	4	Friendly Beat	Roland	8Beat	Friendly Beat.STL	85,283	None	92

Files:14 - Size:2,016,657 Export data ☒ *Not Modified*

Session = default

Song

Sessions Windows

Sessions Import Export Exit

Songs:1

☒ Delete all ☐ Undelete all Add Songs

Del...	#	Extended Filename	Artist	Genre	FileName	Size	Index
<input type="checkbox"/>	1	Amazing Grace	None	Gospel	Amazing Grace.MID	42,782	None
<input type="checkbox"/>	2	1_DONTST	Unknown	Unknown	1_DONTST.MID	89,267	None
<input type="checkbox"/>	3	1_FOURBR	Unknown	Unknown	1_FOURBR.MID	35,468	None
<input type="checkbox"/>	4	1_GONNAF	Unknown	Unknown	1_GONNAF.MID	50,147	None

Files:7 - Size:360,078 Export data ☒ *Not Modified*

Session = default

User Program

Sessions Windows

Sessions Import Export Exit

User Program/Music Assistant:1

☒ Delete all ☐ Undelete all Add User programs ☒ Set ALL Music Assist ☐ Set ALL User program

Del...	#	Extended Filename	M.Ass. Extended Filename	Genre	M.Ass. Genre	Artist	StyleLink	SongLink	FileName	Size	Index	Music ...
<input type="checkbox"/>	1	A non Corrida	A non Corrida	Dance	Dance	None	70's Disco	No Link	A non Cor...	862	None	<input type="checkbox"/>
<input type="checkbox"/>	2	Ab zum Sueden	Ab zum Sueden	Dance	Dance	None	Fast Surf	No Link	Ab zum S...	862	None	<input type="checkbox"/>
<input type="checkbox"/>	3	Absolute Everyone	Absolute Everyone	Pop	Pop	None	Cool Rap	No Link	Absolute ...	862	None	<input type="checkbox"/>
<input type="checkbox"/>	4	Achy Broken Heart	Achy Broken Heart	Rock	Rock	None	60's Rock'N	No Link	Achy Brok...	862	None	<input type="checkbox"/>

Files:760 - Size:855,120 Export data ☒ *Modified*

Session = default

Note:

The extended ASCII code characters are not provide (see table N.1 above).

Note:

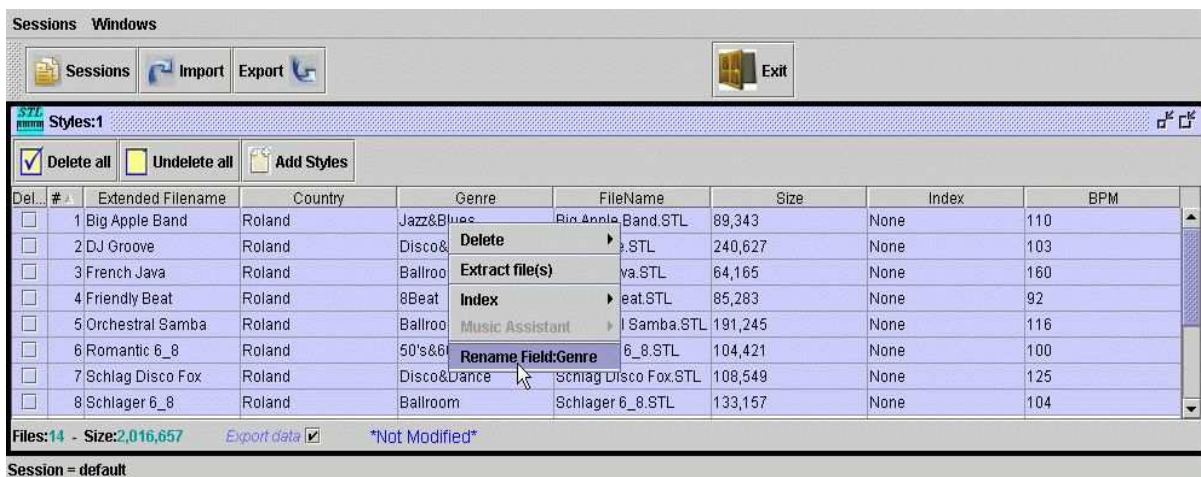
Press “Enter” or click the left button of the mouse outside the rename field, so that the new name will be updated on database.

How to rename the same “Genre” of the Song/Style/User Program on many files simultaneously

Note (for Mac users):

Functions using the right button of the mouse for windows, can be activated using key “ctrl” and Mouse button

1. By using the left button of the mouse click one field and hold down, then move down. All selected fields become blue. By using the right button of the mouse click on the “Genre” column once and choose “Rename field:Genre”...



2. ...Write a genre...



3. Click “Ok”

Note:

The extended ASCII code characters are not provide (see table N.1 above).

How to rename a “Country” of the Style

Note (for Mac users):

Functions using the right button of the mouse for windows, can be activated using key “ctrl” and Mouse button

1. Double click on the field of “Country” column of the style window
2. Write another name



Note:

The extended ASCII code characters are not provide. (Ex. é, à, etc... will be converted)

Note:

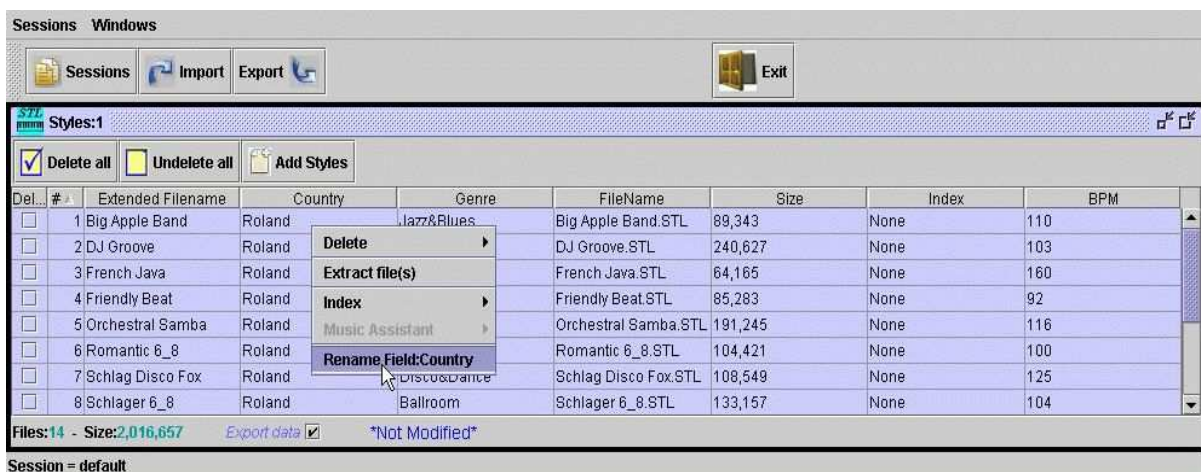
Press “Enter” or click the left button of the mouse outside the rename field, so that the new name will be updated on database.

How to rename the same “Country” of the Style on many files simultaneously

Note (for Mac users):

Functions using the right button of the mouse for windows, can be activated using key “ctrl” and Mouse button

1. By using the left button of the mouse click one field and hold down, then move down. All selected fields become blue. By using the right button of the mouse click on the “Country” column once and choose “Rename field: Country”...



2. ...Write the country...



3. Click “Ok”

Note:

The extended ASCII code characters are not provide (see table N.1 above).

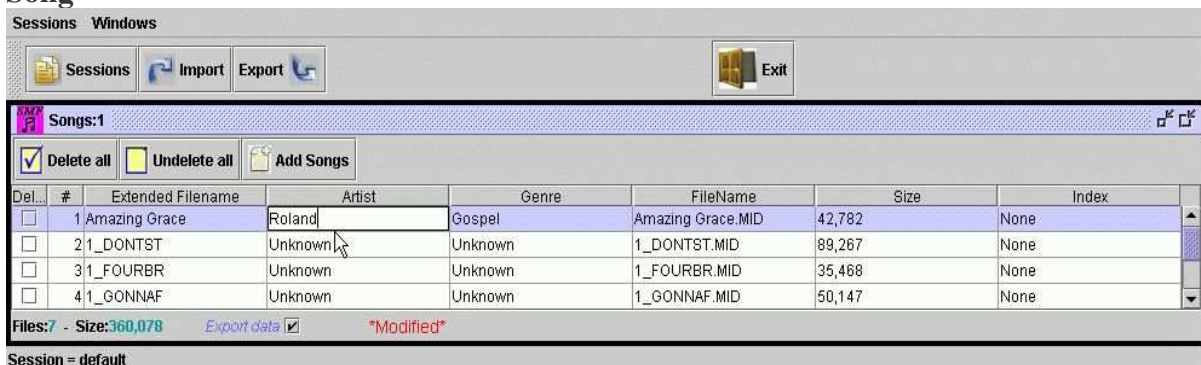
How to rename an “Artist” of the Song/Music Assistant

Note (for Mac users):

Functions using the right button of the mouse for windows, can be activated using key “ctrl” and Mouse button

1. Double click on the field of “Artist” column of the Song or User Program/music Assistant window
2. Write another name

Song



Music Assistant



Note:

The extended ASCII code characters are not provide (see table N.1 above).

Note:

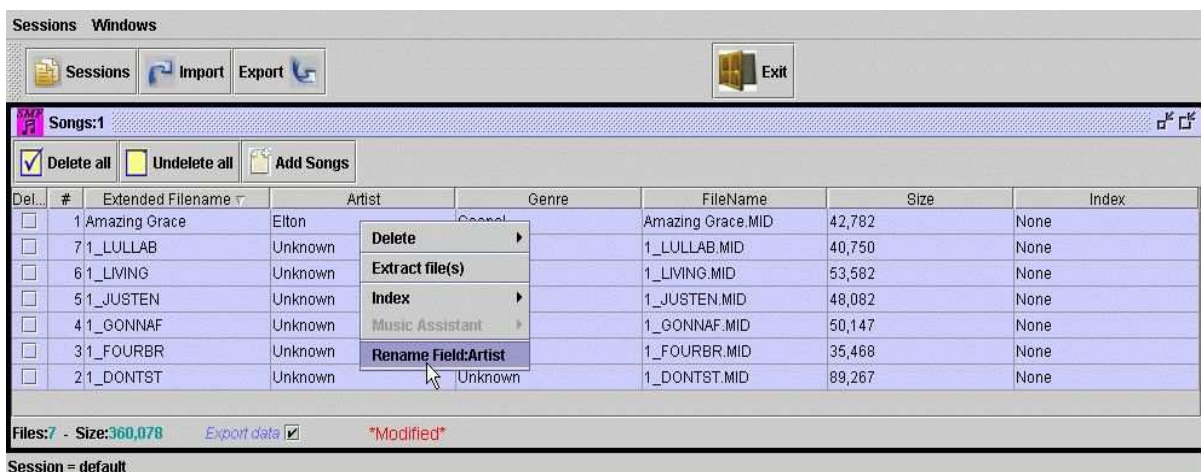
Press “Enter” or click the left button of the mouse outside the rename field, so that the new name will be updated on database.

How to rename the same “Artist” of Songs on many files simultaneously

Note (for Mac users):

Functions using the right button of the mouse for windows, can be activated using key “ctrl” and Mouse button

1. By using the left button of the mouse click one field and hold down, then move down. All selected fields become blue. By using the right button of the mouse click on the “Artist” column once and choose “Rename field: Artist”...



2. ...Write the artist...



3. Click “Ok”

Note:

The extended ASCII code characters are not provide (see table N.1 above).

How to rename the same “Artist” of the Music Assistant on many files simultaneously

Note (for Mac users):

Functions using the right button of the mouse for windows, can be activated using key “ctrl” and Mouse button

1. By using the left button of the mouse click one field and hold down, then move down. All selected fields become blue. By using the right button of the mouse click on the “Artist” column once and choose “Rename field: Artist”...



2. ...Write the artist...



3. Click “Ok”

Note:

The extended ASCII code characters are not provide. (Ex. é, à, etc... will be converted)

How to rename a “Music Assistant name ”

Note (for Mac users):

Functions using the right button of the mouse for windows, can be activated using key “ctrl” and Mouse button

1. Double click on the field of “M. Ass Extended file name” column of the User Program/Music Assistant window
2. Write another name



Note:

The extended ASCII code characters are not provide (see table N.1 above).

Note:

Press “Enter” or click the left button of the mouse outside the rename field, so that the new name will be updated on database.

How to rename a “Genre” of music assistant

Note (for Mac users):

Functions using the right button of the mouse for windows, can be activated using key “ctrl” and Mouse button

1. Double click on the field of “M. Ass.Genre” column of the User Program/music Assistant window
2. Write another name



Note:

The extended ASCII code characters are not provide (see table N.1 above).

Note:

Press “Enter” or click the left button of the mouse outside the rename field, so that the new name will be updated on database.

How to change an “Index” of Song-Style-User Program

1. Click on the field of “Index” column of the Song or style or User Program window
2. Choose an index in the list

Styles

Sessions Windows

Sessions Import Export Exit

Styles:1

☒ Delete all ☐ Undelete all Add Styles

Del...	#	Extended Filename	Country	Genre	FileName	Size	Index	BPM
<input type="checkbox"/>	1	Big Apple Band	Roland	Jazz&Blues	Big Apple Band.STL	89,343	None	110
<input type="checkbox"/>	2	DJ Groove	Roland	Disco&Dance	DJ Groove.STL	240,627	None	103
<input type="checkbox"/>	3	French Java	Roland	Ballroom	French Java.STL	64,165	Pop / Rock	160
<input type="checkbox"/>	4	Friendly Beat	Roland	8Beat	Friendly Beat.STL	85,283	Regional	92
<input type="checkbox"/>	5	Orchestral Samba	Roland	Ballroom	Orchestral Samba.STL	191,245	Evergreens	116
<input type="checkbox"/>	6	Romantic 6_8	Roland	50's&60's	Romantic 6_8.STL	104,421	Latin	100
<input type="checkbox"/>	7	Schlag Disco Fox	Roland	Disco&Dance	Schlag Disco Fox.STL	108,549	Electronic	125
<input type="checkbox"/>	8	Schlager 6_8	Roland	Ballroom	Schlager 6_8.STL	133,157	Lounge	104
							EZ Listening	

Files:14 - Size:2,016,657 Export data ☒ *Not Modified*

Session = default

Songs

Sessions Windows

Sessions Import Export Exit

Songs:1

☒ Delete all ☐ Undelete all Add Songs

Del...	#	Extended Filename	Artist	Genre	FileName	Size	Index
<input type="checkbox"/>	1	Amazing Grace	Elton	Gospel	Amazing Grace.MID	42,782	None
<input type="checkbox"/>	7	1_LULLAB	Unknown	Unknown	1_LULLAB.MID	40,750	None
<input type="checkbox"/>	6	1_LIVING	Unknown	Unknown	1_LIVING.MID	53,582	Background
<input type="checkbox"/>	5	1_JUSTEN	Unknown	Unknown	1_JUSTEN.MID	48,082	Top 40
<input type="checkbox"/>	4	1_GONNAF	Unknown	Unknown	1_GONNAF.MID	50,147	Up-Tempo
<input type="checkbox"/>	3	1_FOURBR	Unknown	Unknown	1_FOURBR.MID	35,468	Ballads
<input type="checkbox"/>	2	1_DONTST	Unknown	Unknown	1_DONTST.MID	89,267	Old & Gold
							Latin
							Regional

Files:7 - Size:360,078 Export data ☒ *Modified*

Session = default

User Program



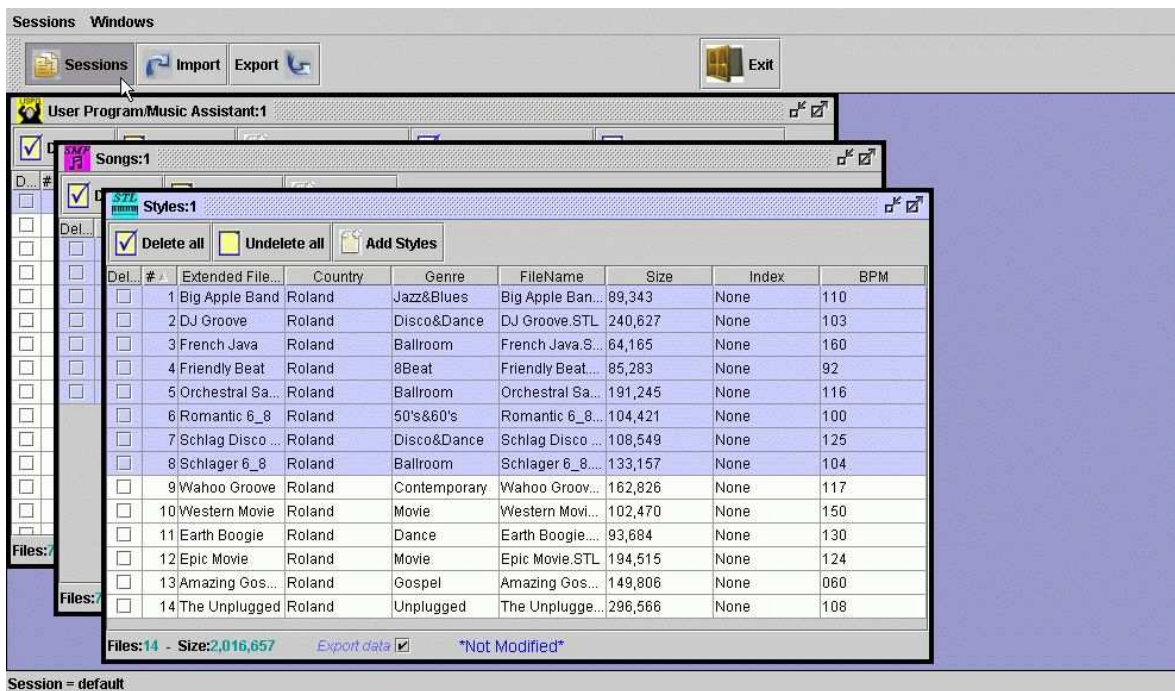
How to change same index on many files simultaneously

1. By using the left button of the mouse click one field and hold down, then move down. All selected fields become blue. By using the right button of the mouse click once and choose a Index in the list

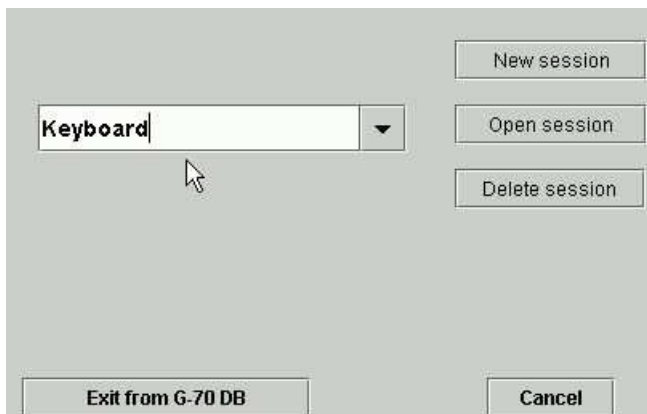


How to create a new session

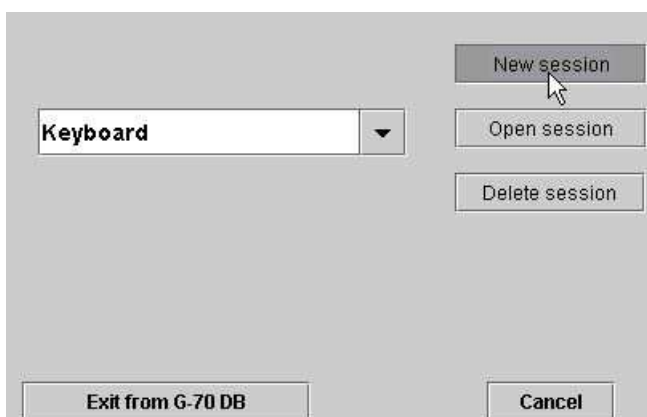
1. Click “Session”



2. Write the name of the new session



3. Click on “New session”

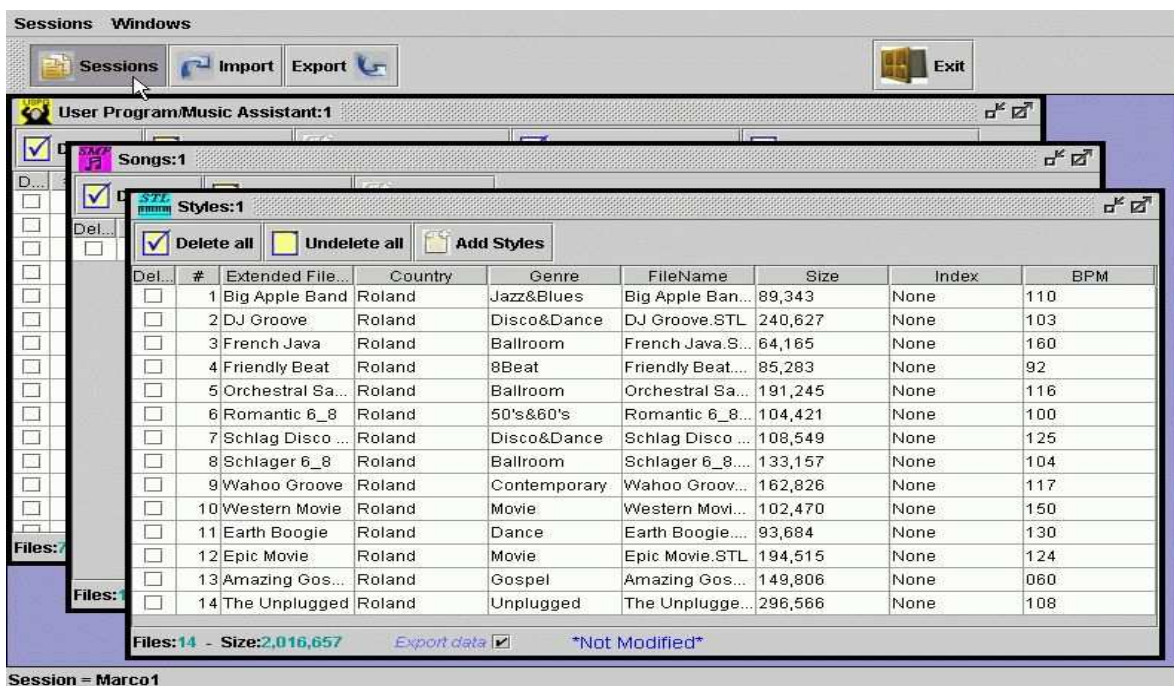


4. Click Ok

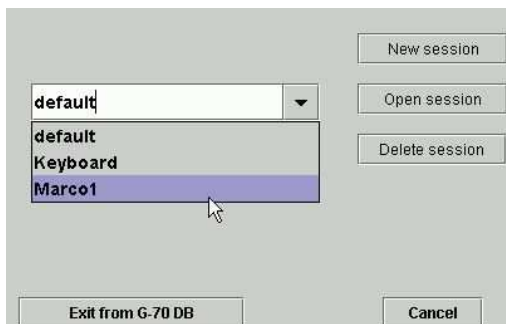


How to delete sessions

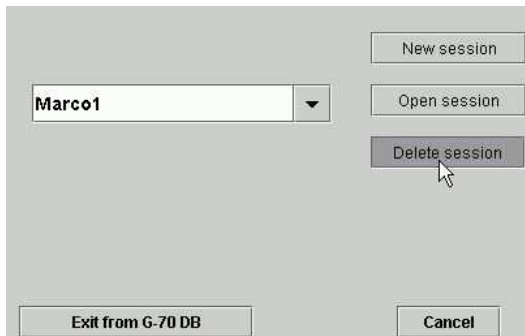
1. Click "Session"



2. Select the session that you want to delete

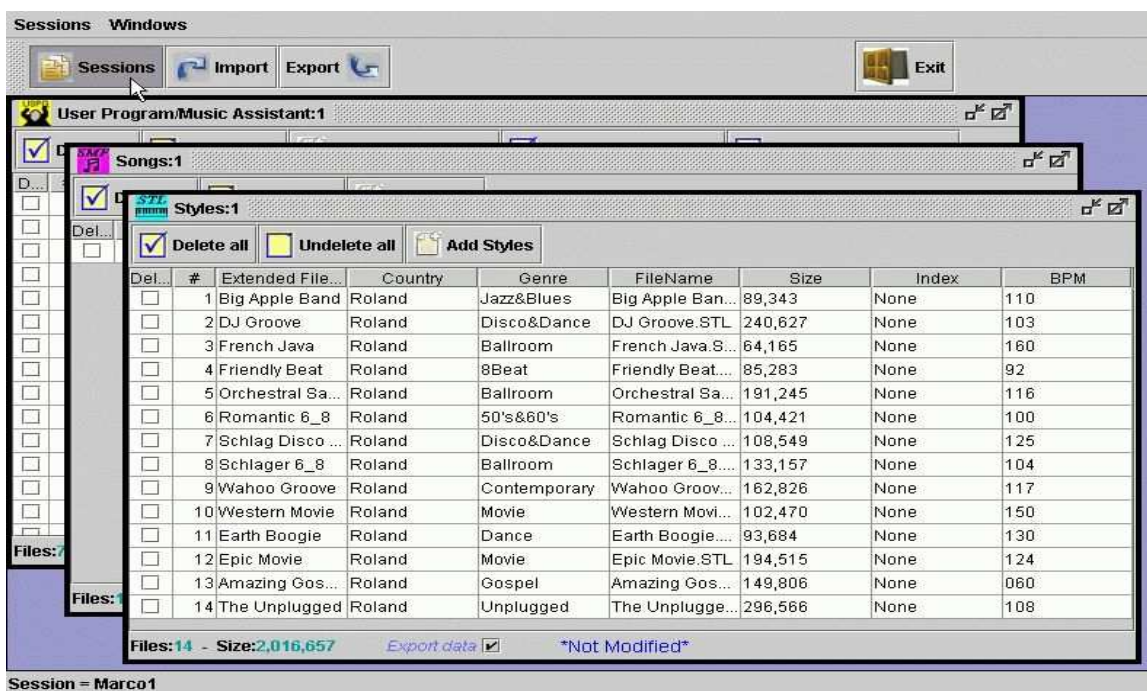


- Click on “Delete session”

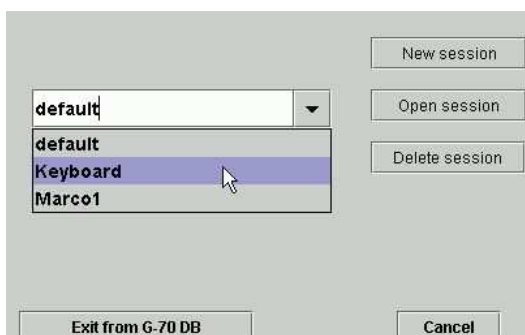


How to change session

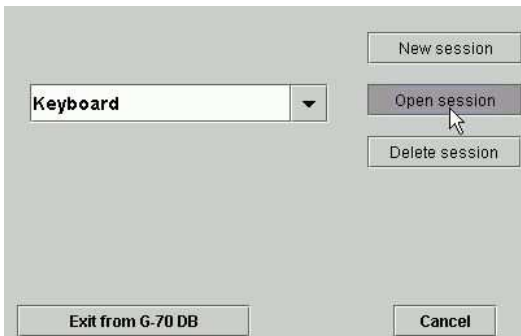
- Click “Session”



- Select the session that you want to change



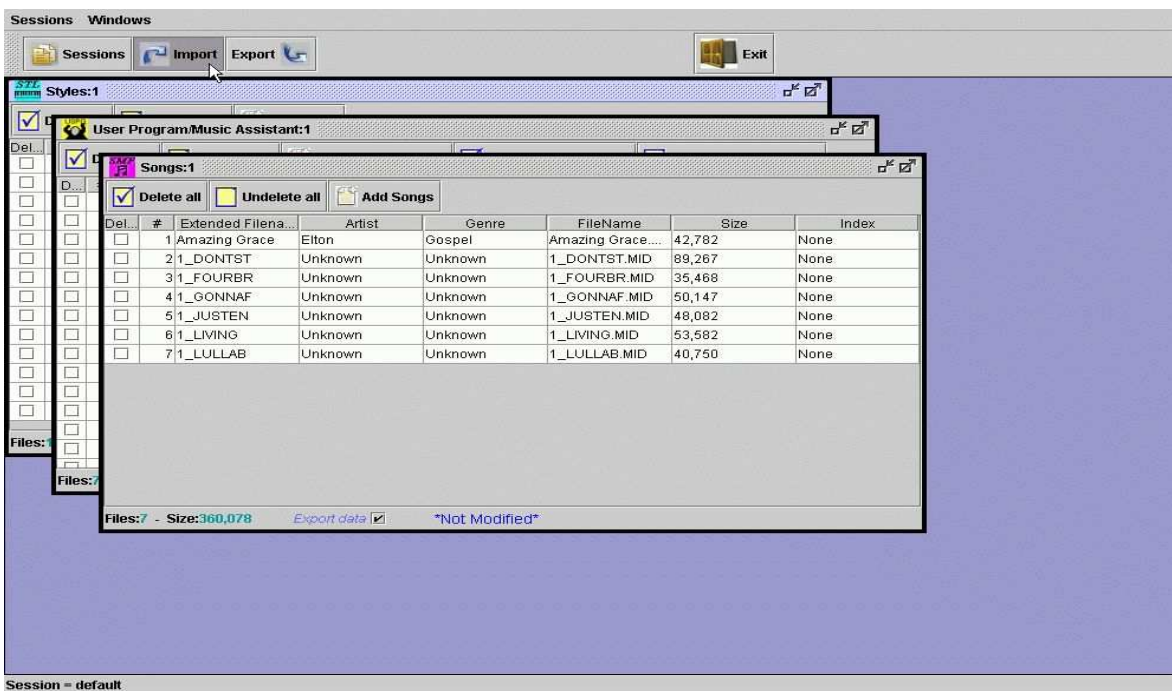
- Click on “Open session”



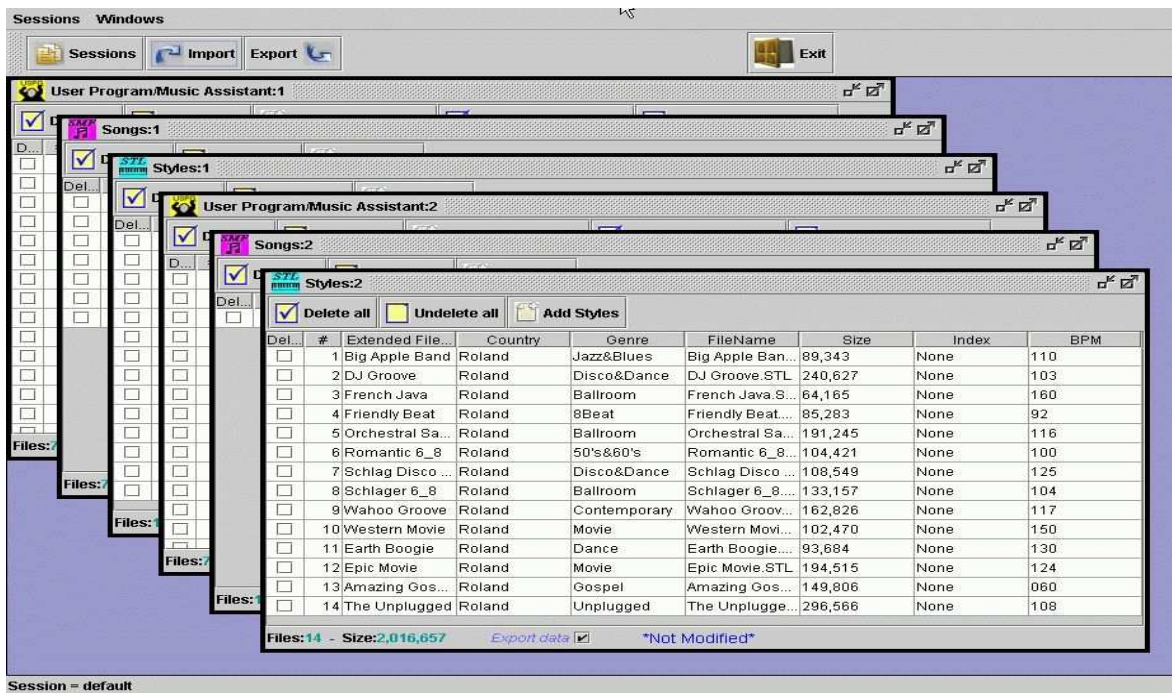
How to import two or more databases

After having imported one database

- Click “Import”



- Choose a different database that you want to import from a directory
- Press “Import”, the database is imported into your “session” area. You can see six different windows:



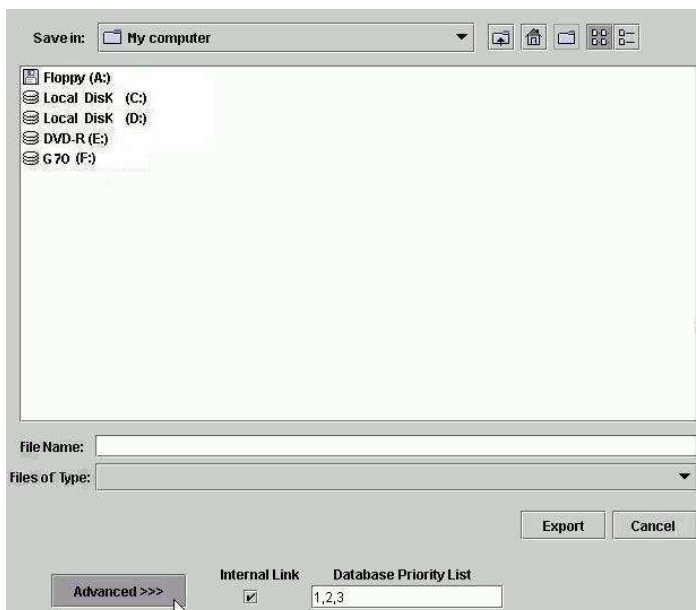
Note:

windows with number 1 are from database 1, windows with number 2 are from the second database.

How to decide the export priority of two or more databases

After having clicked export:

1. Click "Advanced"

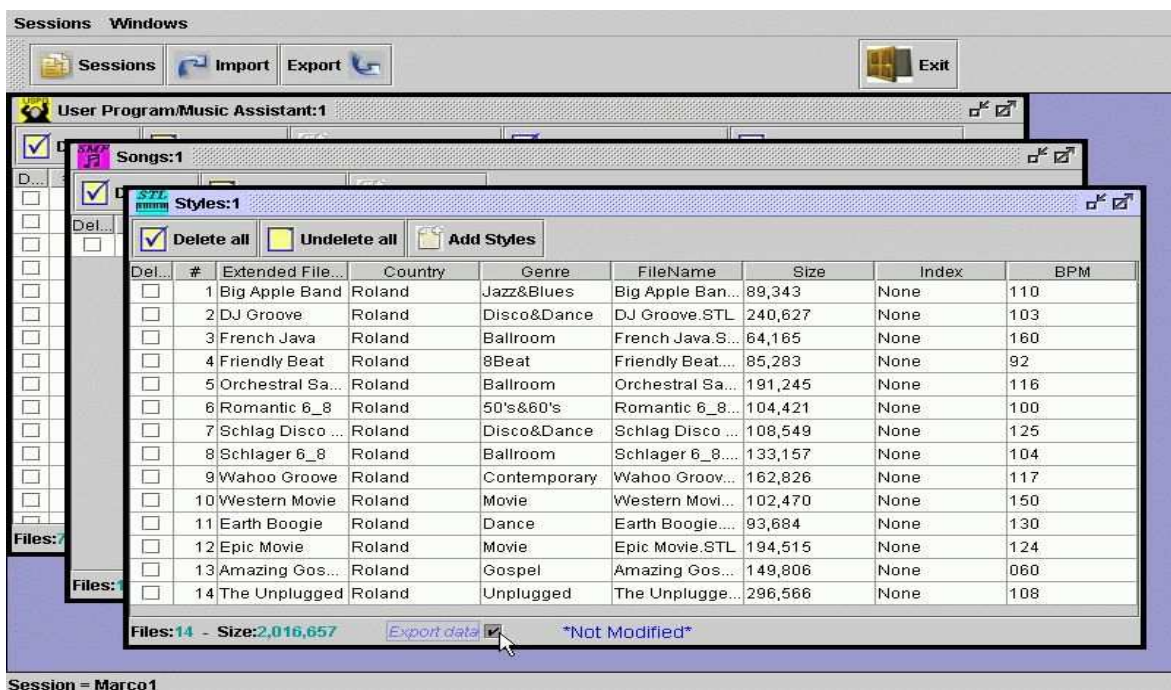


2. On "Database Priority List" field write the priority of the database Ex. 1,2,3

This means that the database 1 is the main database. All files contained in the database 2 and 3 will be copied into the database 1. Files contained in the database 1 that have the same name as files contained in the database 2 or 3 will not be replaced.

How to export Song Database or style database or User program/Music Assistant database only

1. Click “Export data” parameter of Styles, songs and User Program/Music Assistant windows to decide which window you want to export.



Note:

When exporting windows having the “Export Data“ parameter deselected, all data related to these windows will be deleted on G-70.

How to save song, style or User program file only

1. Select a Song/Style/User program file
2. Click the right button of the mouse
3. Select “Extract file(s)”



4. Choose the directory where you want to save file
5. Click “Open”

How to save songs, styles or User program files simultaneously

1. By using the left button of the mouse click one field and hold down, then move down. All selected fields become blue. By using the right button of the mouse click once and choose “Extract file(s)”.

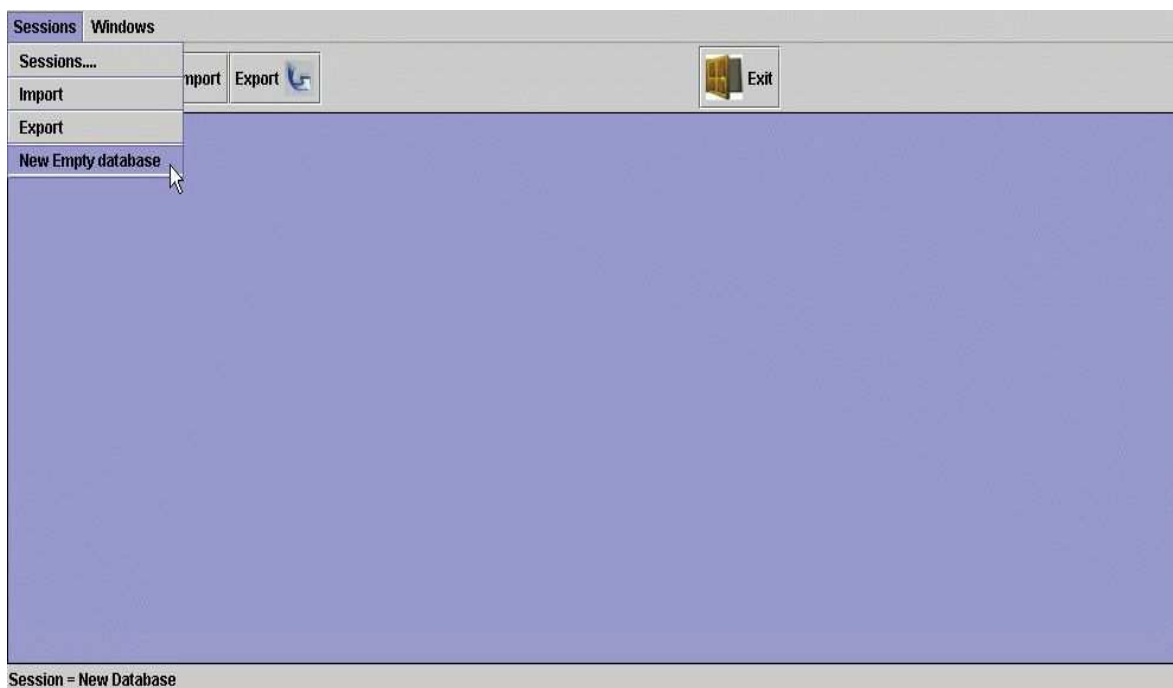


2. Choose the directory where you want to save file
3. Click “Open”

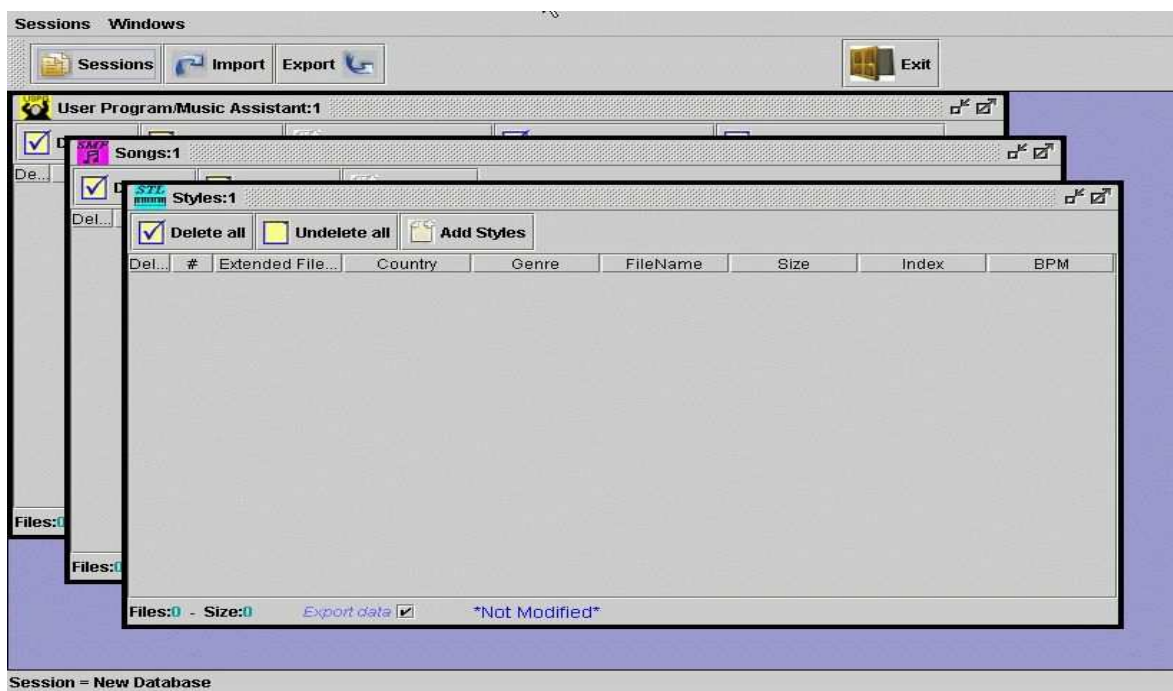
How to create a new empty database

After having created a new session:

1. Click “Session” on menu bar and then select “New Empty Database”....



... you can see three different empty windows (Song, Styles and User Program)

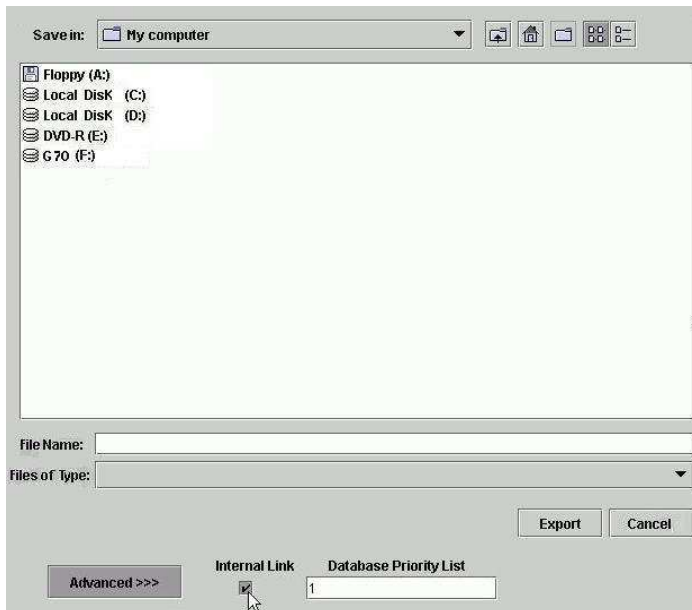


How to set styles with Internal or External link of the User Program

Note:

After Having selected User Programs, this option decides which device(Internal or External) styles or songs have to be loaded from.

1. Click on the “Internal Link” field of the Export Windows.
2. Set the tick ON to save all Data linked to Internal device, set the tick Off to save all Data linked to External device.



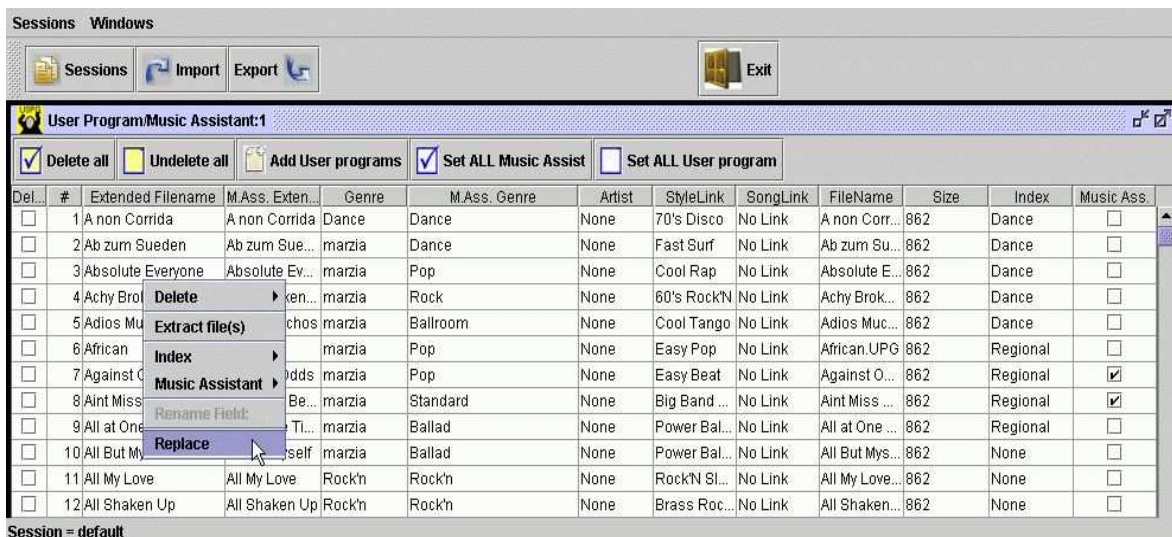
How to replace the “extended file name” of User Program/Music Assistant using a text file

1. Create a Text file (ex. using notepad) writing the old and new name separated by a comma without spaces.

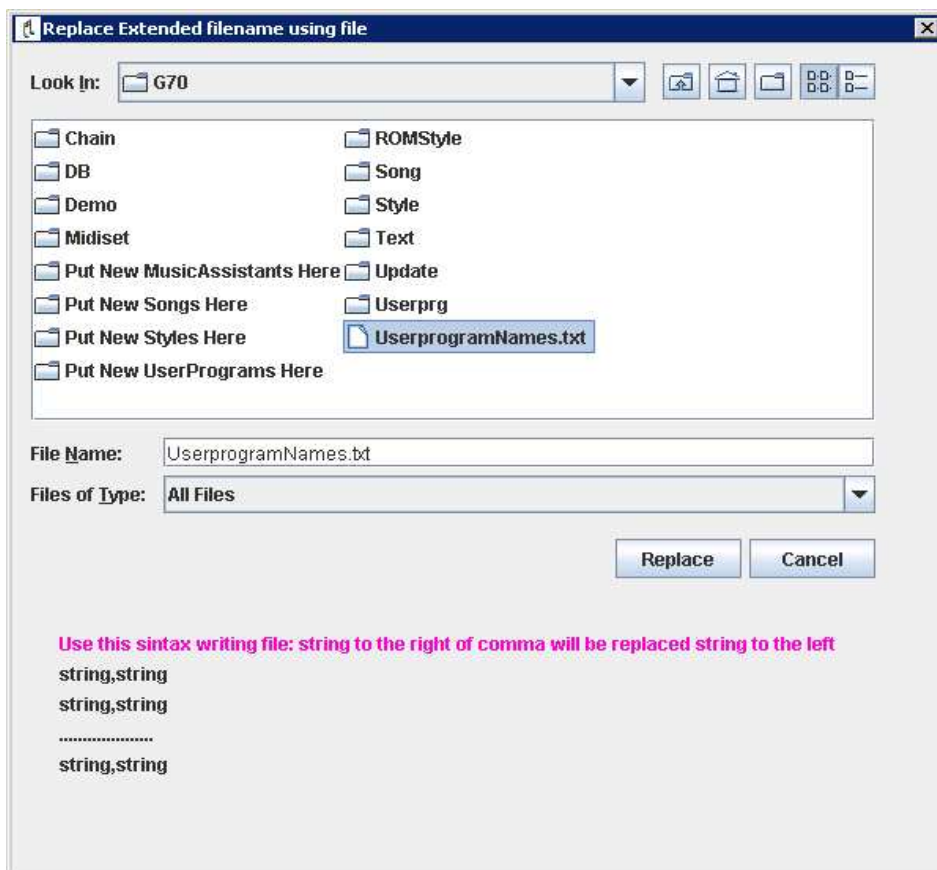
Example:

All at one time,All at once
Blue Moonlight,Blue Moon
Etc...

2. Save the Text file
3. By using the right button of the mouse click on “Extended file name” column and choose “Replace”



4. Load the Text file previously saved
5. Click "Replace"



6. Click "OK"



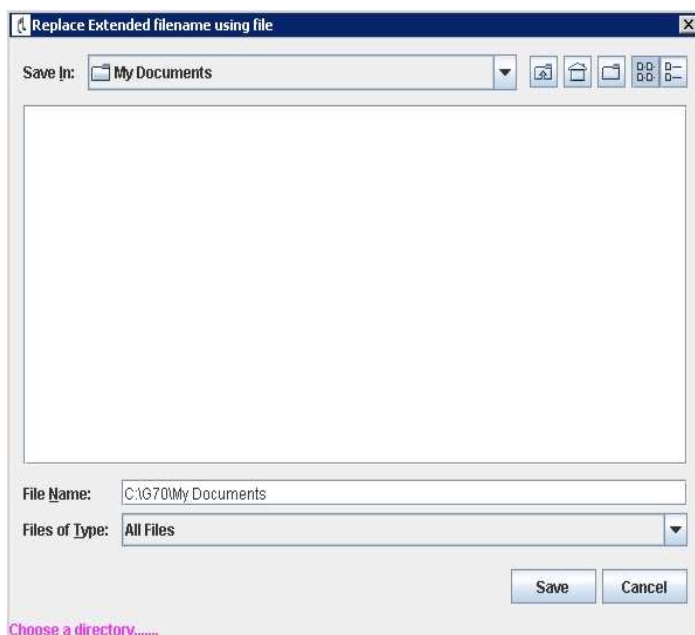
How to export "Extended Filename" and "Filename" fields into text file.

This function allows to save your "Extended Filename" and "Filename" fields into text files. It's available for User Program/Music Assistant, Song and Styles.

1. By using the right button of the mouse click once on the Songs, Styles or User Program/Music Assistant windows, depending on which category you want to create the text file.
2. Choose the option "Export into text file".



3. Choose the directory where you want to save your text files.
4. Click "Save"



5. Click “Ok”



The G70 Database Manager creates the following files:

- ext_filename.txt
- filename.txt
- ext_filename_ma.txt (For User Program/Music Assistant only)

Database Export (see page 8).

By *G70DatabaseManager Ver. 1.1* your database will be exported with indexes (“Genre”, “Artist”, “Country”) in alphabetic order according to the “Extended Filename” field.